

COMPLETE SOLUTION
GENUINE QUALITY

Central Slave Cylinder, clutch



6 difference compared AP and poor quality part

1. diameter. AP part same as genuine dimension.

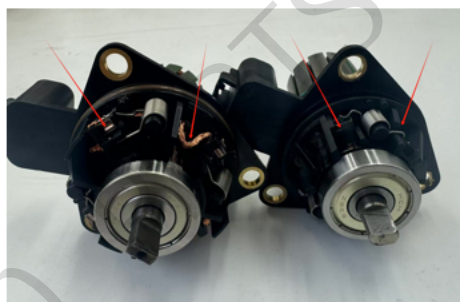
2. Appearance. AP part same as genuine design.

3. AP part use KOYO bearing.

4. AP part use NSK bearing.

5. wire enamel quality difference. AP use imported one.

6. Design difference. AP is same as genuine design.



1. Diameter difference.

2. Appearance difference.

AP: 60mm

Appearance different.

Poor Quality: 55mm



3.AP bearing

AP bearing is NSK & KOYO

4.Poor Quality bearing

Poor Quality is unknown brand.



5. wire enamel

AP used imported wire enamel

6.Rotor design

Poor Quality is domestic wire enamel

The background of the entire page is a solid blue color. Overlaid on this background is a large, light-blue watermark that reads "ANPU AUTO PARTS" diagonally from the top-left to the bottom-right. In the upper right quadrant, there is a circular graphic consisting of several concentric circles, also in a light blue shade, creating a target-like or ripple effect.

ANPU AUTO PARTS CO., LTD

E-mail: sales01@anpuautopart.com

Address: Jiujing road 1501, Jiuting, Songjiang, Shanghai, China

Tel: 021-57655701

Cell: 18221291483